

COMING TO  
SUMMIT, NJ  
FALL 2019

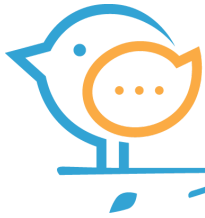
# MORE THAN WORDS<sup>®</sup>, THE HANEN PROGRAM<sup>®</sup>

*13-week program that provides parents of young children with Autism Spectrum Disorder (ASD) or social communication difficulties with practical tools to help their children communicate.*



FACILITATED BY

**RACHEL CORTESE, MS ED, MS CCC-SLP, BCBA**  
Speech Language Pathologist  
Board Certified Behavior Analyst



# PROGRAM SCHEDULE

## SEPTEMBER 10, 9:30AM - 11:30AM

*Orientation Session*

## SEPTEMBER 17

*Individual Pre-Program Consultation with each family\**

## SEPTEMBER 24, 9:30AM - 12:00PM

*Session 1, Follow Your Child's Lead*

## OCTOBER 1, 9:30AM - 12:00PM

*Session 2, Keep the Interaction Going*

## OCTOBER 8

*Individual Video Feedback Session 1\**

## OCTOBER 15, 9:30AM - 12:00PM

*Session 3, R.O.C.K in People Play*

## OCTOBER 22, 9:30AM - 12:00PM

*Session 4, Help Your Child Learn with Daily Routines*

## OCTOBER 29

*Individual Video Feedback Session 2\**

## NOVEMBER 5, 9:30AM - 12:00PM

*Session 5, Take Out the Toys*

## NOVEMBER 12, 9:30AM - 12:00PM

*Session 6, Expand Your Child's Play: Add Communication and Friends*

## NOVEMBER 19, 9:30AM - 12:00PM

*Session 7, Bring on the Books*

## NOVEMBER 26

*Individual Video Feedback Session 3\**

## DECEMBER 3, 9:30AM - 12:00PM

*Session 8, Bringing It All Together*

\*These appointments will be scheduled individually with your family and will last approximately thirty minutes to one hour.

**All other sessions are parents only.**



## LOCATION

All sessions will be held at MONDO, 426 Springfield Ave., Summit, NJ 07901  
[www.mondosummit.com](http://www.mondosummit.com)



## FEES

Special Introductory Price of \$500 per family for the entire 13 week program

REGISTER  
NOW

## FOR REGISTRATION AND INFORMATION, PLEASE CONTACT:

**Rachel Cortese, MS Ed, MS CCC-SLP, BCBA**

Email: [Rachel@RachelCortese.com](mailto:Rachel@RachelCortese.com), Phone: (347) 471-0596

Online Registration: [RachelCortese.com](http://RachelCortese.com)